

Dedicated bifurcation DES for complex Medina 1.1.1 bifurcation

Claudio Cigalini; Roberto Larghi; Lucas Medizza; Christian Hanna

**Servicio de Diagnóstico y Tratamiento Endovascular
Sanatorio Los Arroyos
Rosario - Argentina**

Potential conflicts of interest

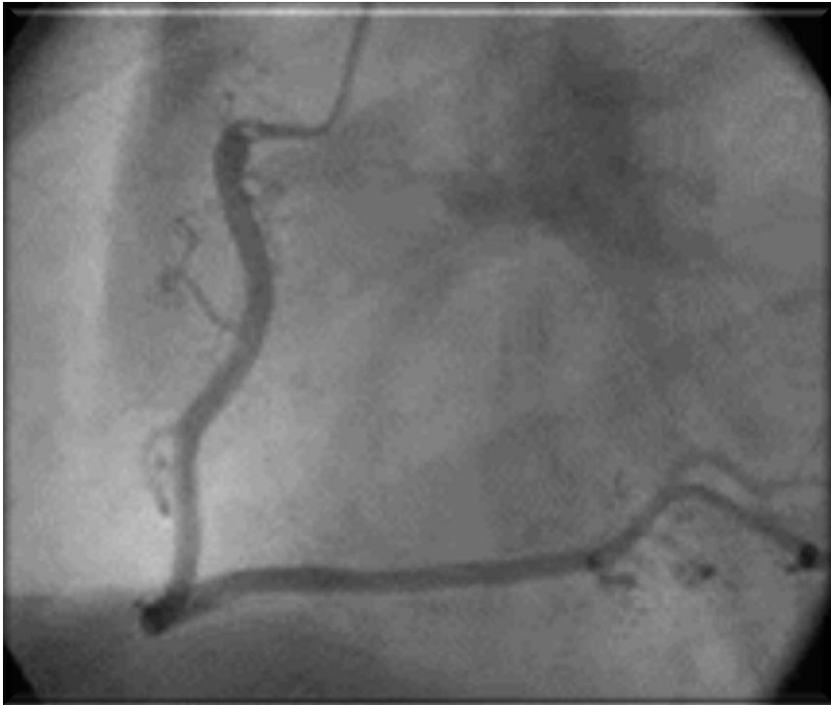
Speaker's name: Claudio Cigalini

I do not have any potential conflict of interest

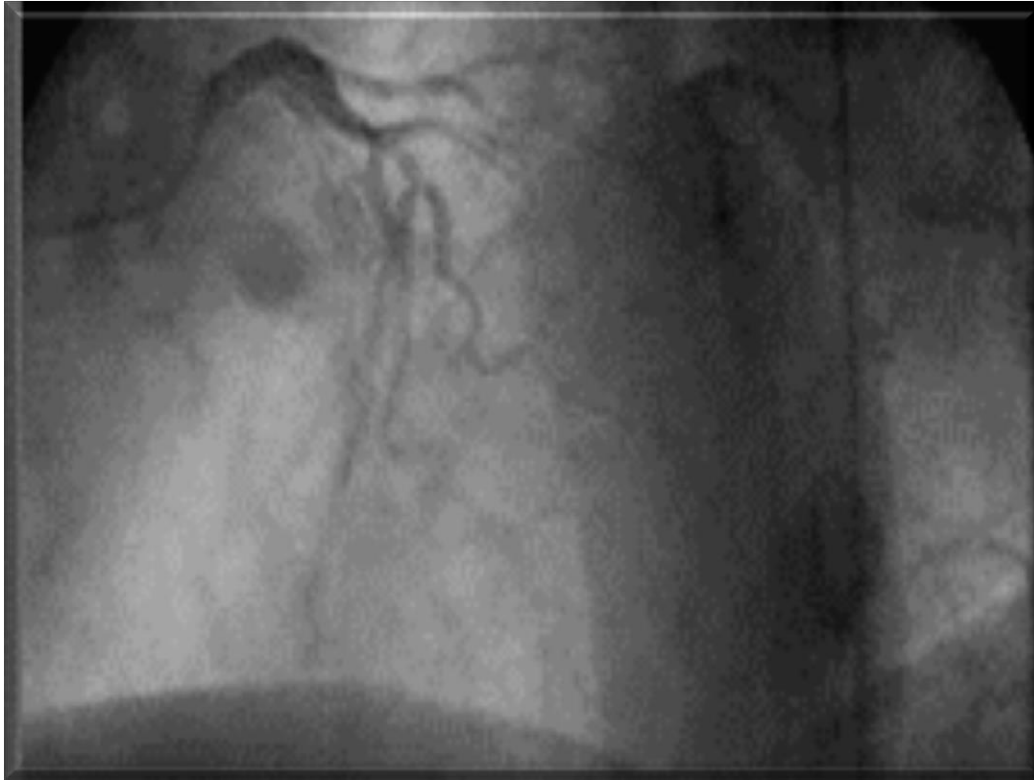
Medical History

- **Male, 54 yo**
- **Risk factors: current smoker, dyslipidemia**
- **No past cardiac history**
- **Clinical Presentation: NSTEMI-ACS, Tnl: 0.56 nd/dl**
- **TIMI Risk score: 2**
- **Euroscore II: 0.69%**
- **Medication: prasugrel; aspirin; atenolol; rosuvastatin; LMW Heparin**
- **Anatomical stratification by Angiography ...**

Baseline Angio



Baseline Angio

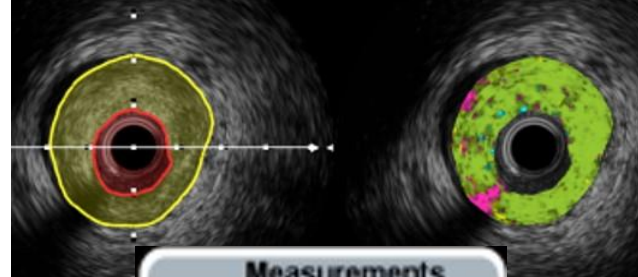
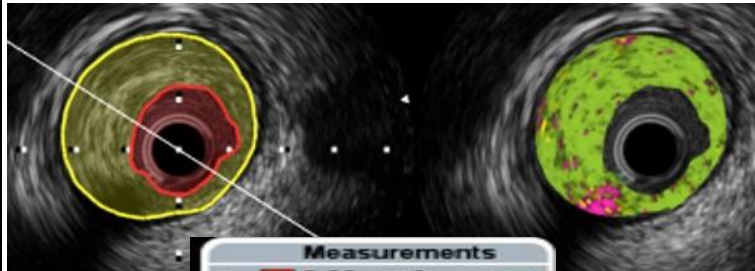


Syntax Score: 12
Ejection Fraction 67%

Considerations...



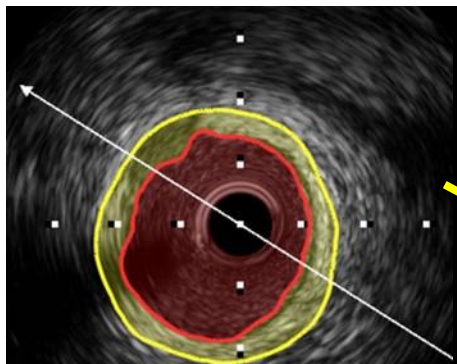
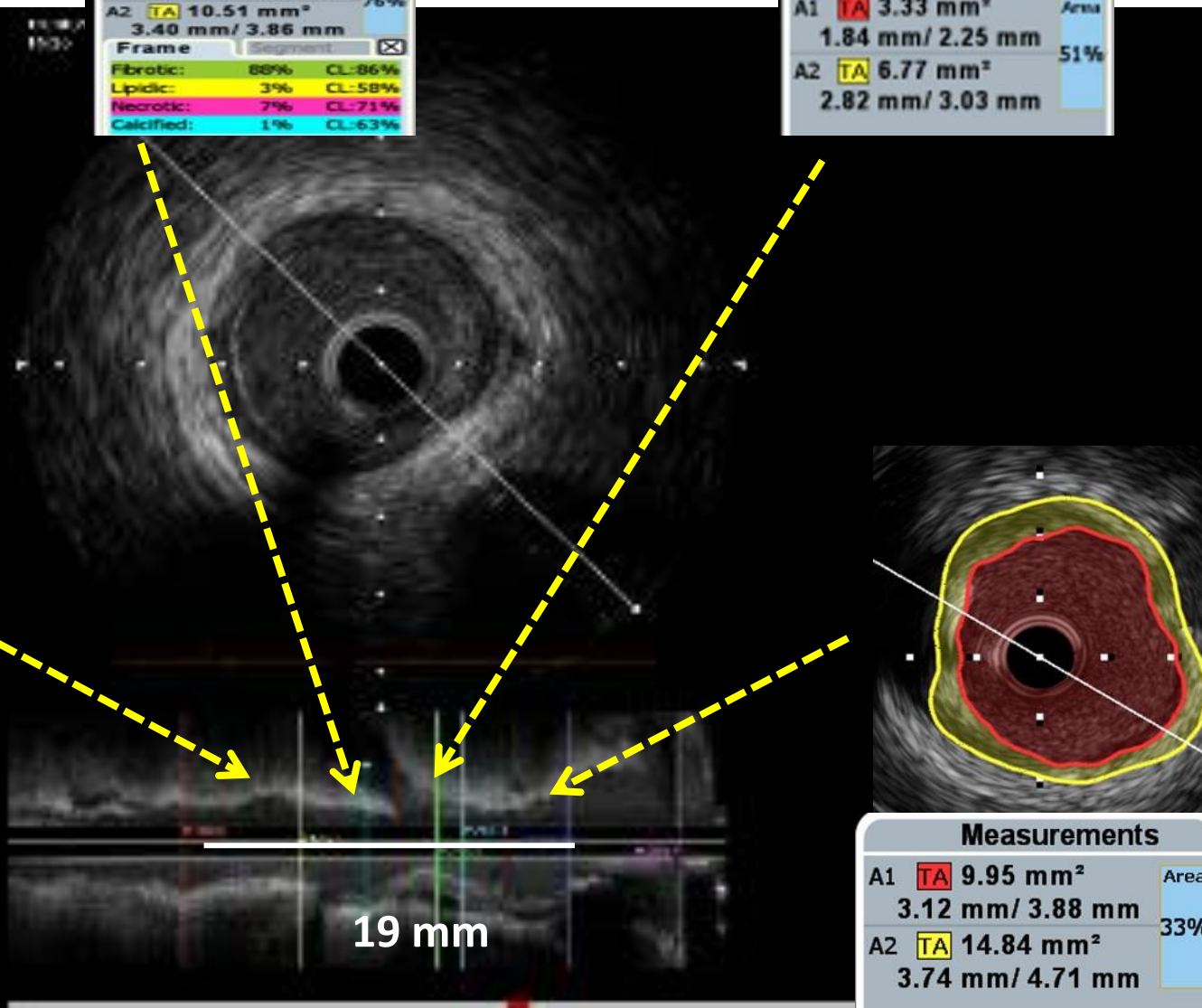
- **The aim of treatment in ACS is patient stabilization**
- **PCI in bifurcation with conventional stents may be laborious, re-wiring the side branch can be difficult and double stenting is frequently complex**
- **First diagonal with significant plaque beyond the ostia = high probability of 2nd stent**
- **The Nile device simplifies the procedure, offering continuous side branch access which allows further treatment if needed**



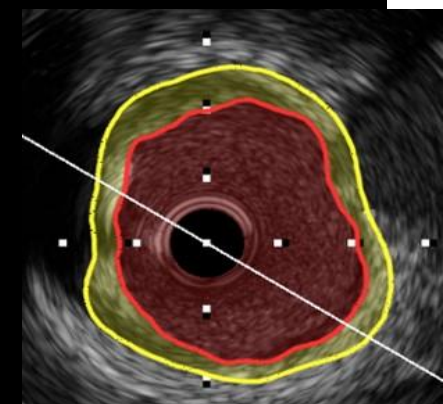
Measurements		
A1	TA	2.56 mm ² Area
		1.67 mm / 1.94 mm 76%
A2	TA	10.51 mm ²
		3.40 mm / 3.86 mm
Frame Segment <input type="checkbox"/>		
Fibrotic:	88%	CL:86%
Lipidic:	3%	CL:58%
Necrotic:	7%	CL:73%
Calcified:	1%	CL:63%

Measurements		
A1	TA	3.33 mm ² Area
		1.84 mm / 2.25 mm 51%
A2	TA	6.77 mm ²
		2.82 mm / 3.03 mm

LAD IVUS

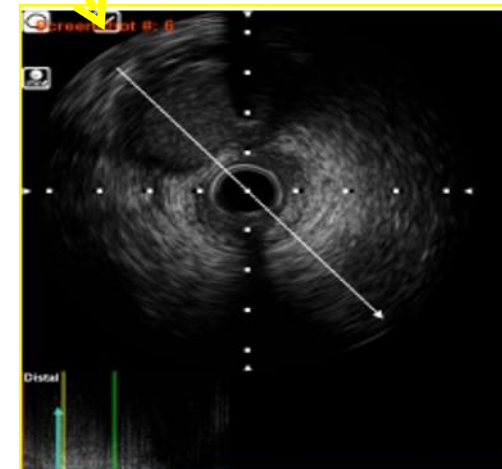
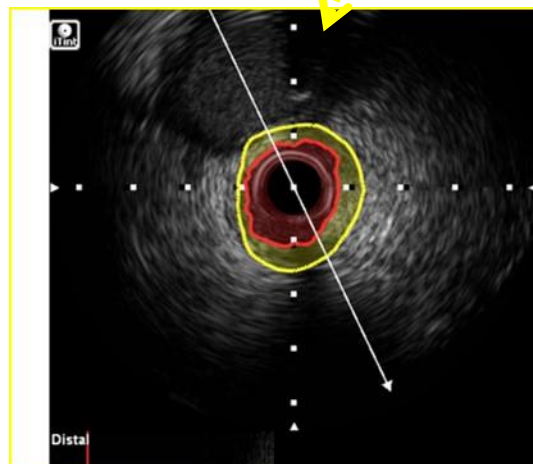
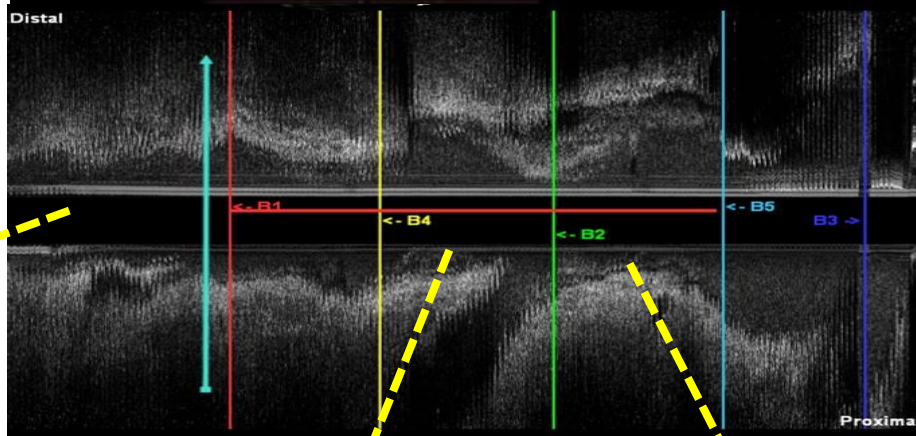
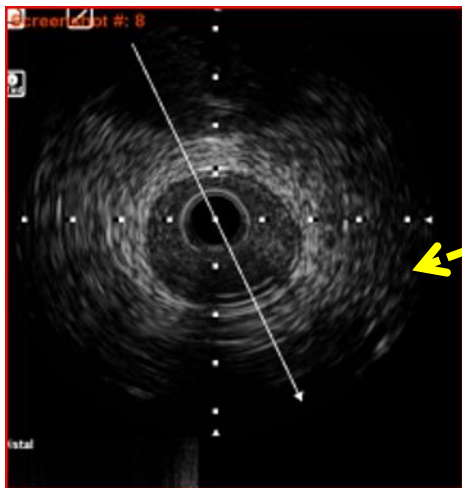
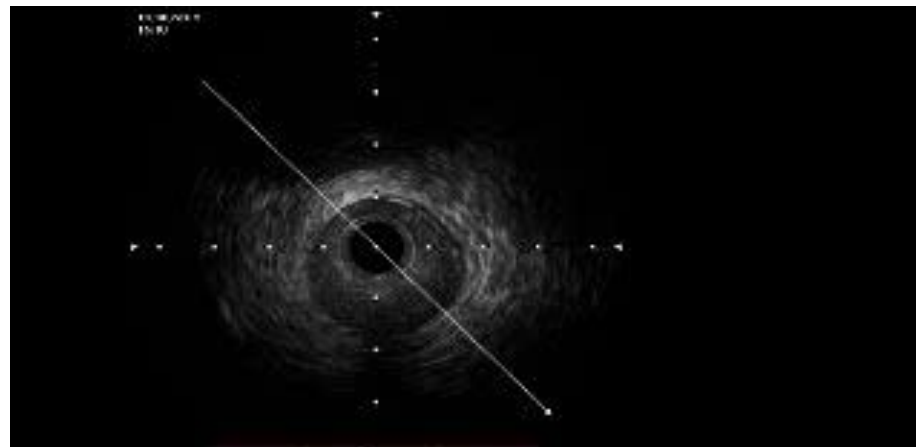


Measurements		
A1	TA	7.32 mm ² Area
		2.75 mm / 3.34 mm 39%
A2	TA	12.03 mm ²
		3.76 mm / 4.04 mm



Measurements		
A1	TA	9.95 mm ² Area
		3.12 mm / 3.88 mm 33%
A2	TA	14.84 mm ²
		3.74 mm / 4.71 mm

First Diagonal IVUS



Measurements		
A1	TA	2.65 mm ²
		1.67 mm / 2.11 mm
A2	TA	4.89 mm ²
		2.26 mm / 2.74 mm
		46%

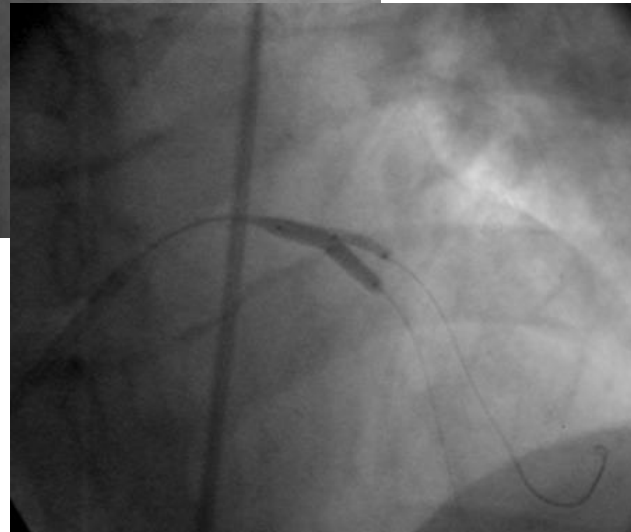
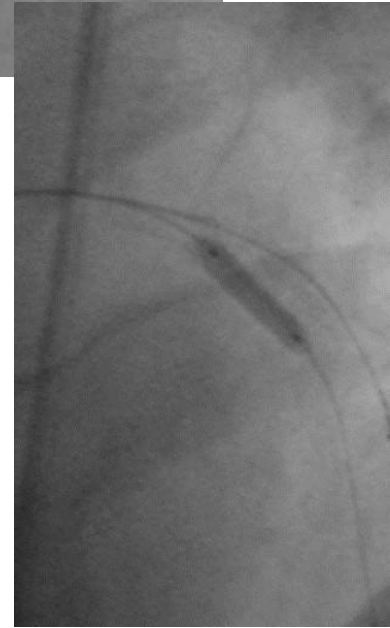
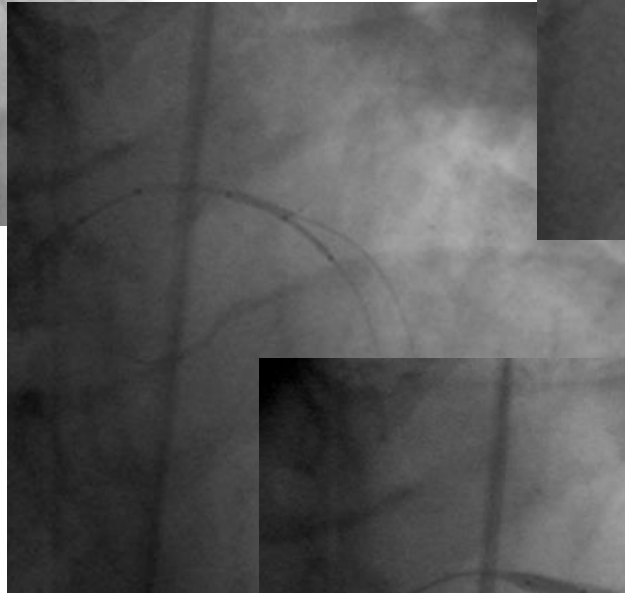
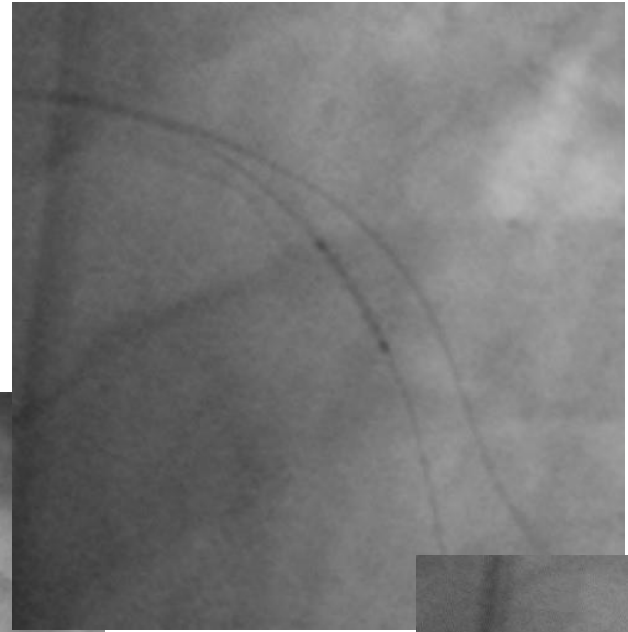
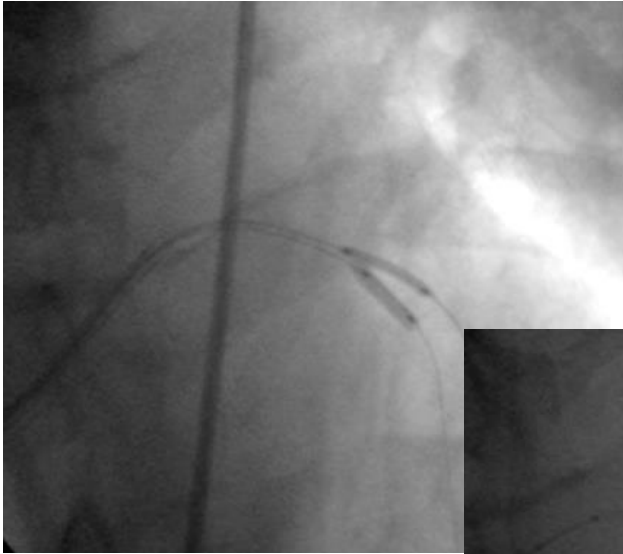
Nile Pax stent



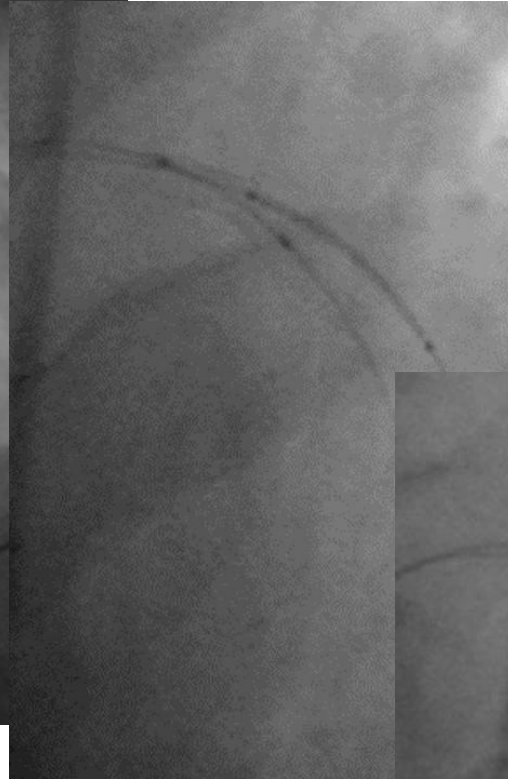
- Low profile - 6 F compatible
- Chromium - cobalt open cell design
- Side aperture at the middle of the stent
- Carina coverage without cells deformation
- Delivery system with two balloons
- Abluminal coated with paclitaxel (no polymer)

PCI

Delta Pax Stent 2.5 x 8mm
14 ATM



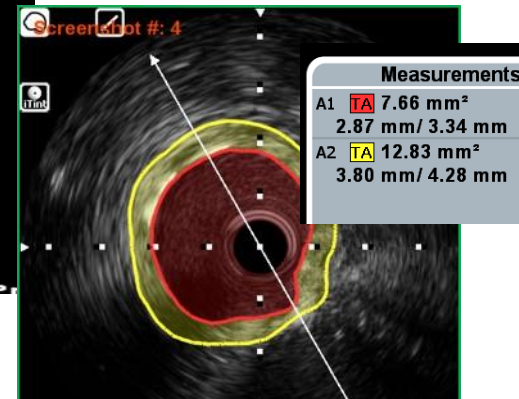
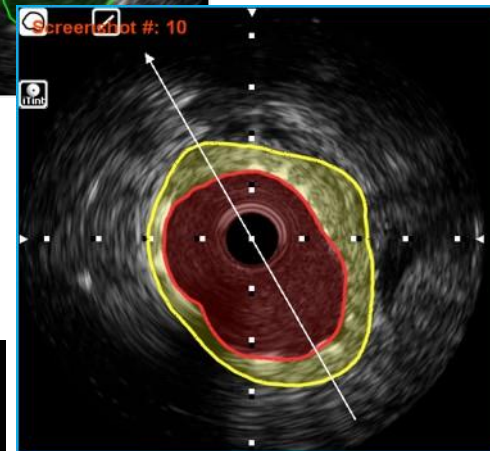
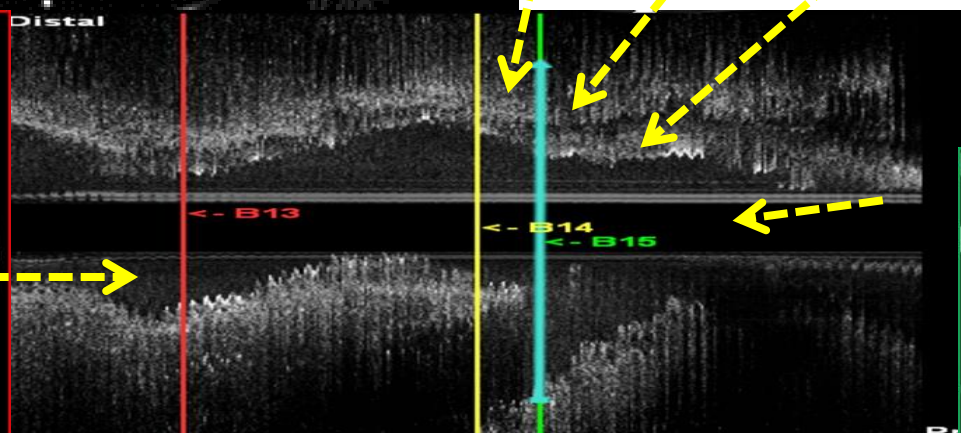
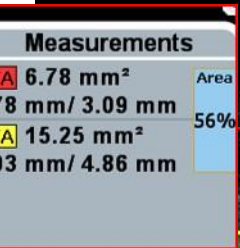
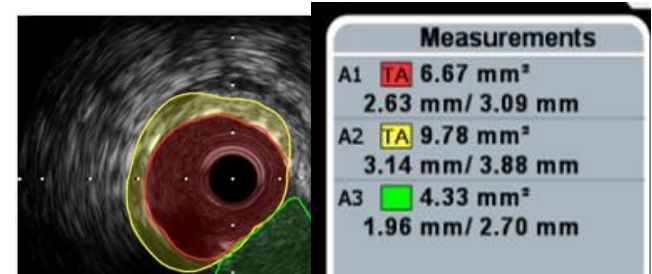
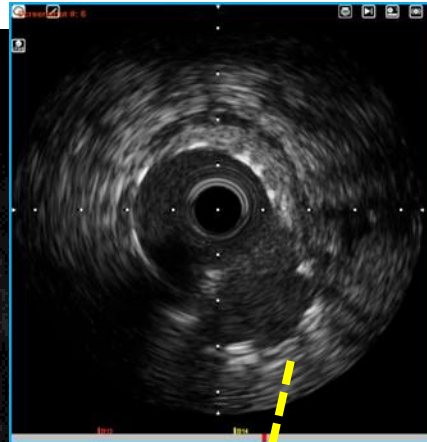
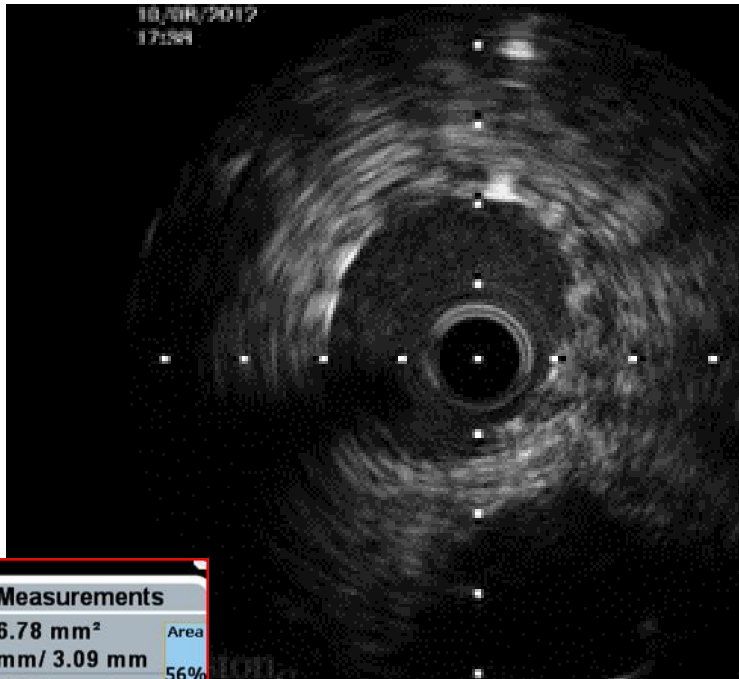
Nile Pax stent 3.0 - 2.5 x 18mm -



Amazonia Pax (PES) 2.5 x 20mm to 1st Diagonal

Final Kissing

Final IVUS



Final Angio



Outcomes...

- **Total procedural time: 48 minutes**
- **Total fluoroscopy time: 15 minutes**
- **Contrast media volume: 190 ml**
- **Discharge in 48 hrs., without complications**
- **Asymptomatic with normal functional tests at 12-months follow-up**

Take home message:

“Not always, but simple is often better”

Approach to this lesson with Nile Pax stent:

- More simple
- Less wires use
- Less time consuming
- Less radiation exposure
- Less contrast volume