



IVUS detection of a rare coronary stent complication

Claudio Cigalini, Roberto Larghi, Lucas Medizza
Servicio de Diagnóstico y Tratamiento Endovascular
Sanatorio Los Arroyos, Rosario, Argentina
claudiocigalini@gmail.com



Potential conflicts of interest

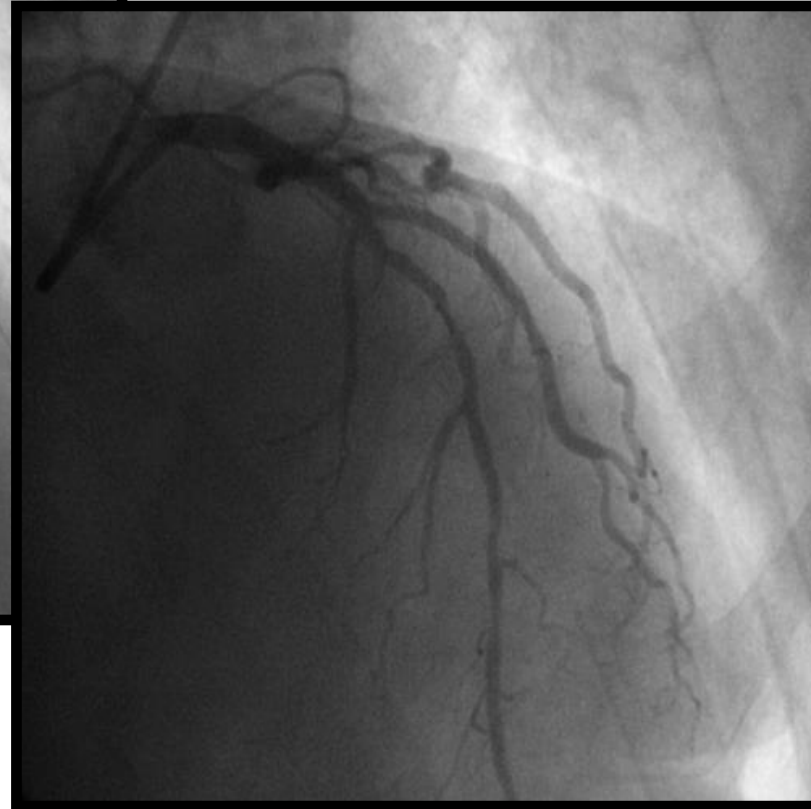
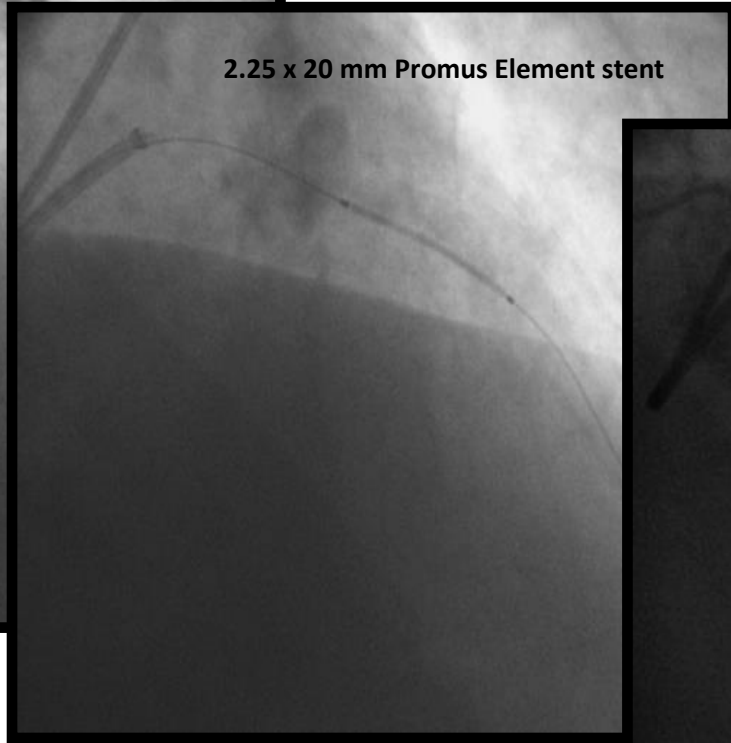
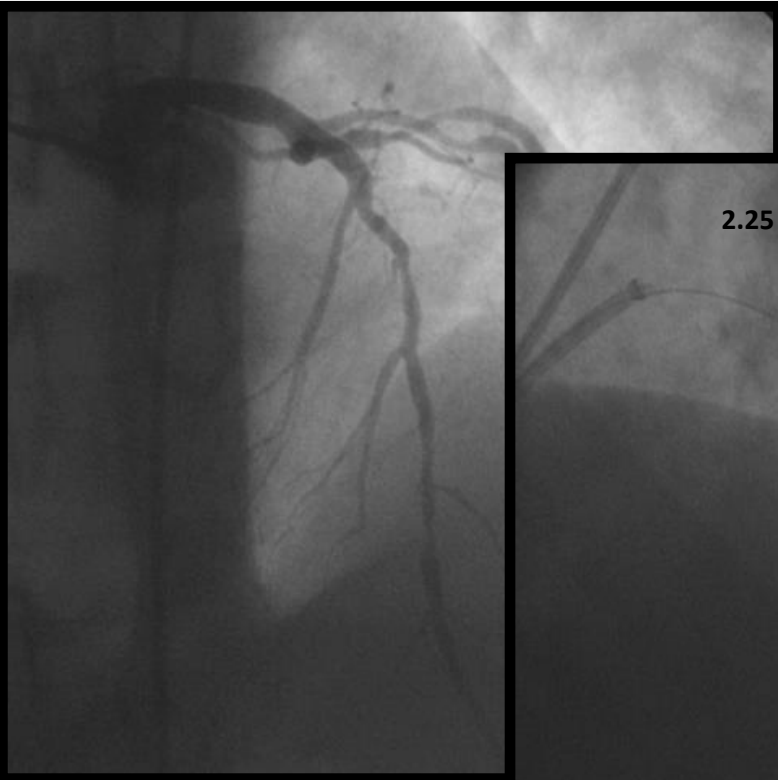
Speaker's name: Claudio Cigalini

I do not have any potential conflict of interest

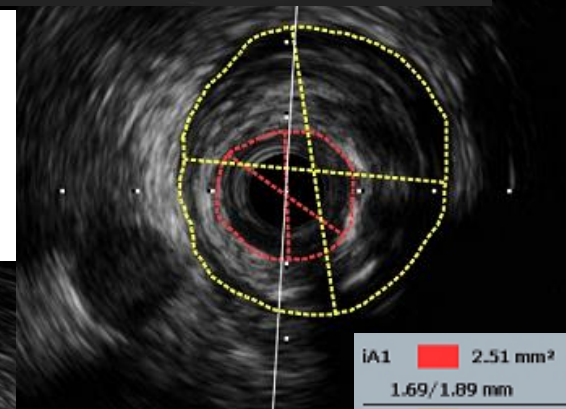
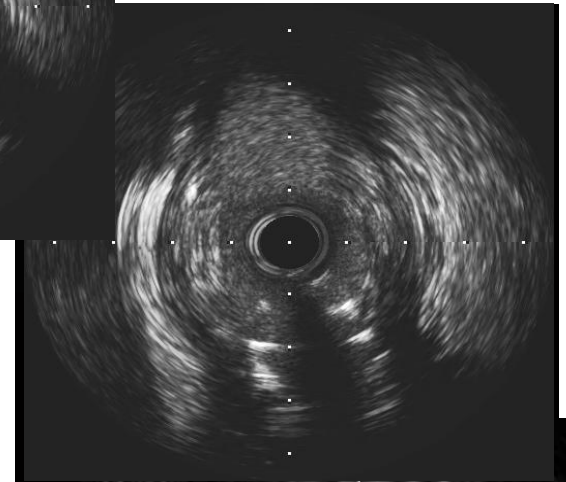
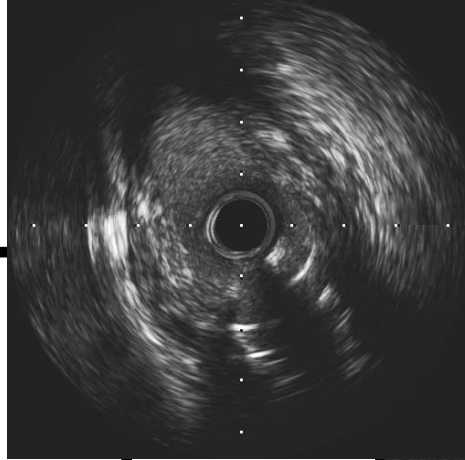
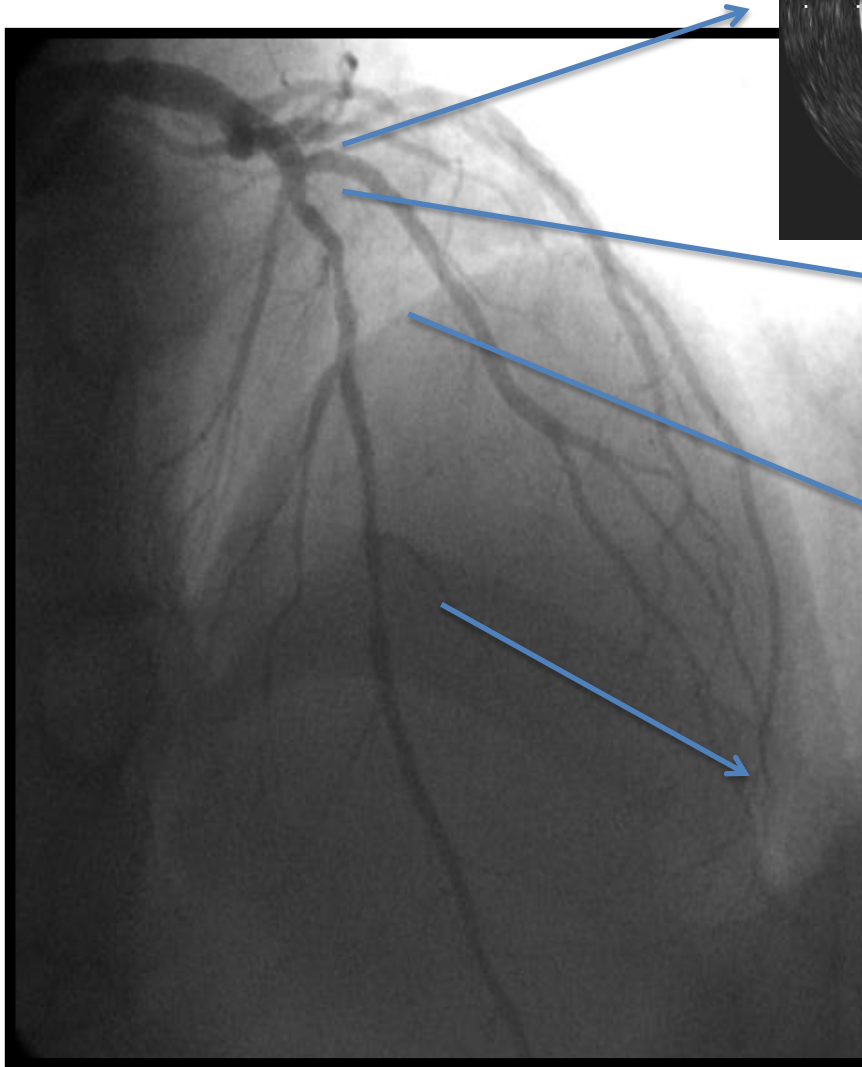
Medical History

- **66-year-old male**
- **Risk Factors:** hypertension, dyslipidemia
- First diagonal PCI during **STEMI** with Everolimus-Eluting Platinum Chromium stent implantation 30 days before.
- **Long diffuse left anterior descending lesion** was left for a staged procedure.
- **Medication:** aspirin, ticagrelor, rosuvastatin, bisoprolol and pantoprazole
- PCI to LAD was performed 30 days after STEMI

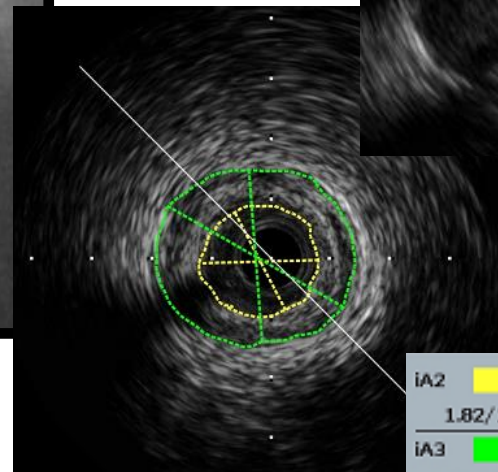
First diagonal PCI during STEMI



Second procedure

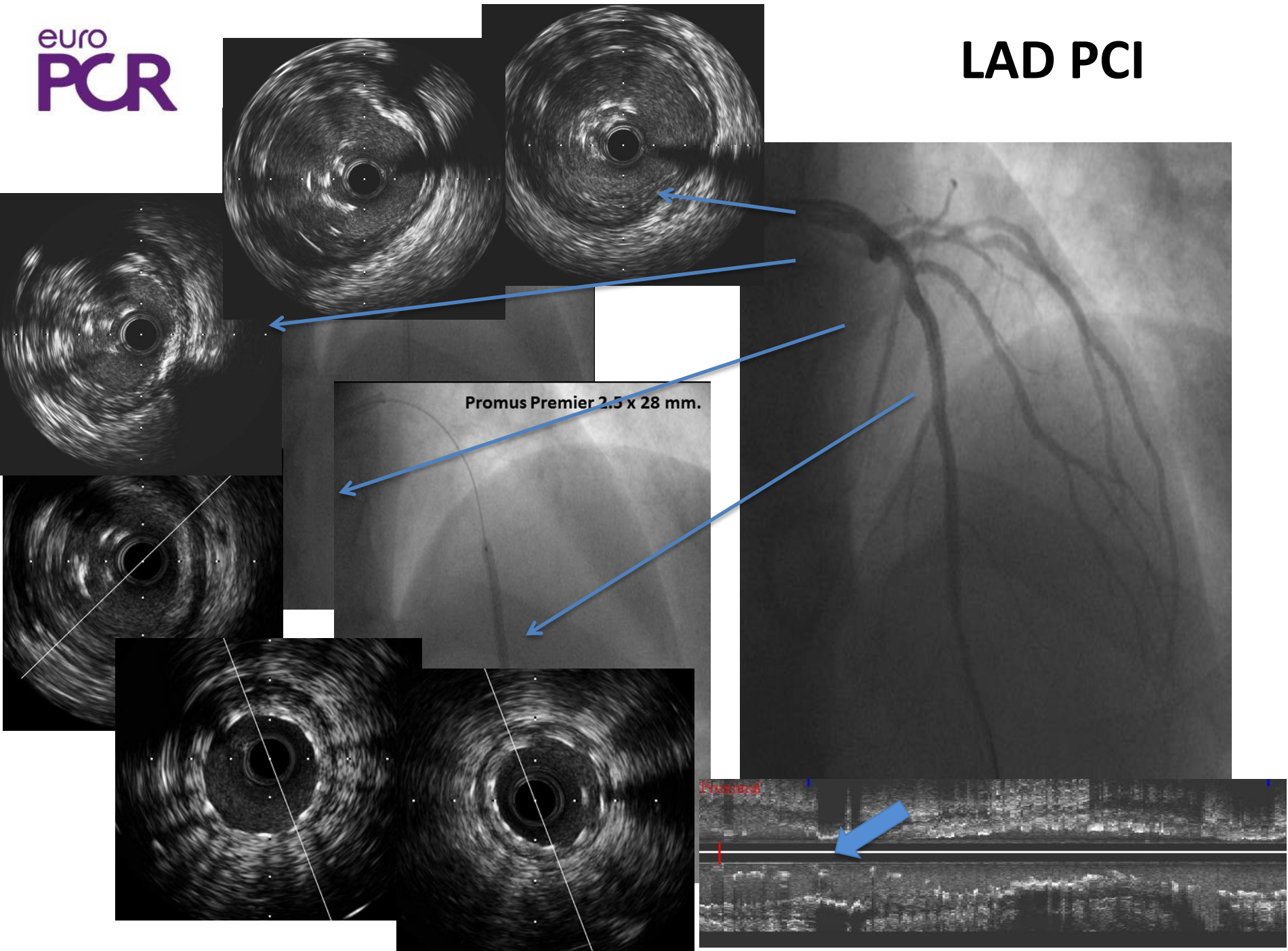


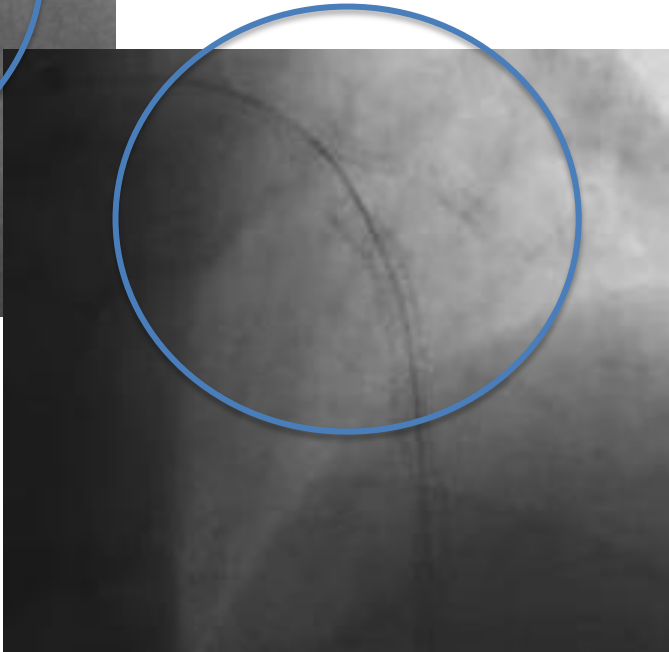
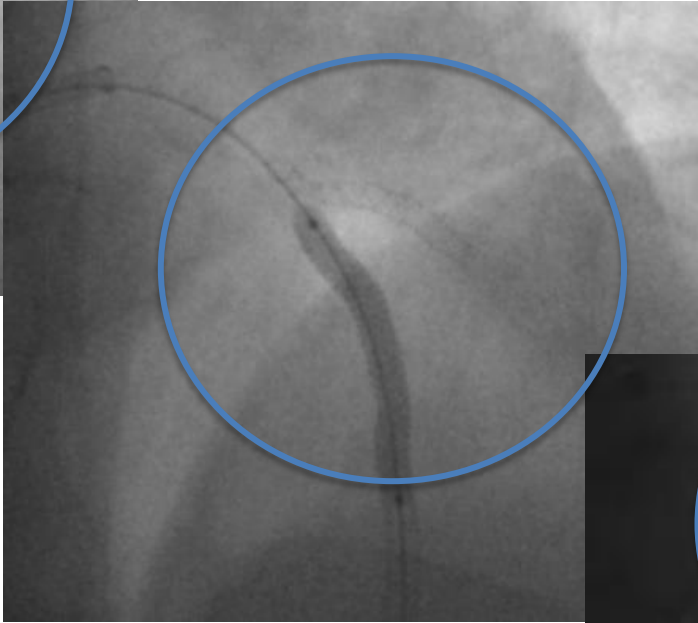
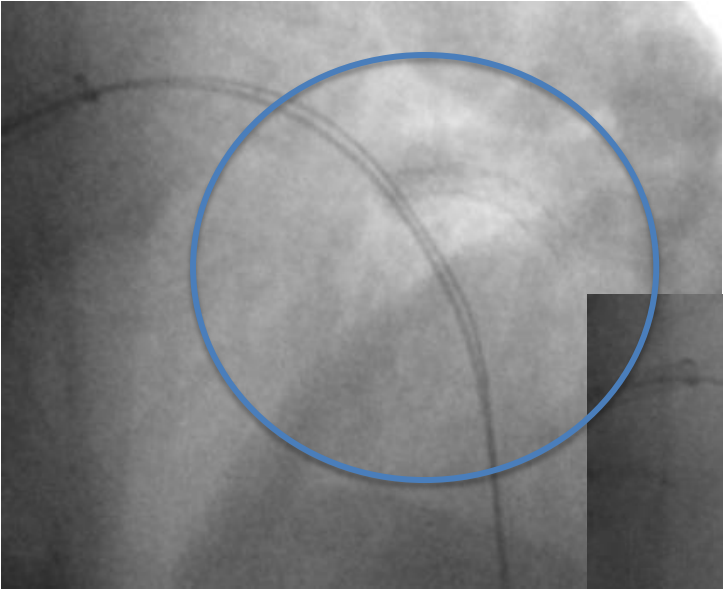
iA1	2.51 mm ²
	1.69/1.89 mm
iA2	10.71 mm ²
	3.49/3.86 mm

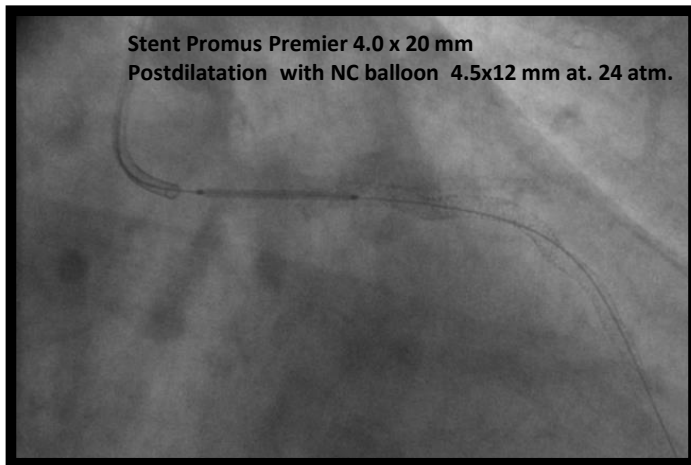
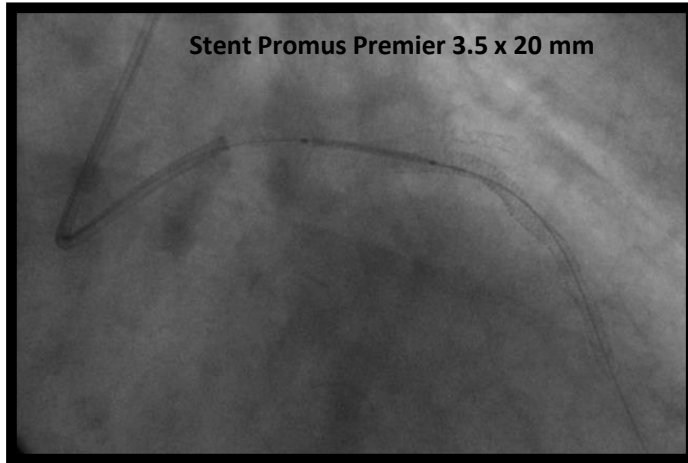


iA2	2.78 mm ²
	1.82/1.98 mm
iA3	7.66 mm ²
	2.84/3.35 mm

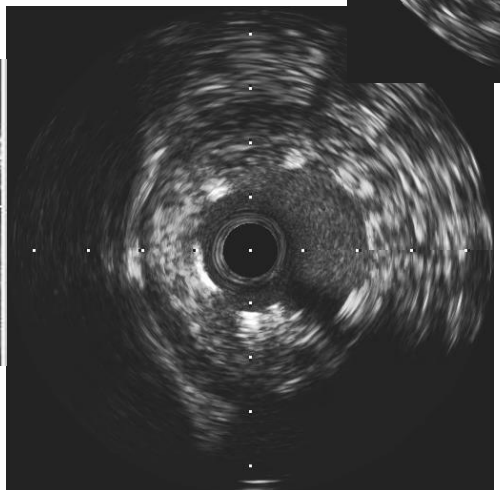
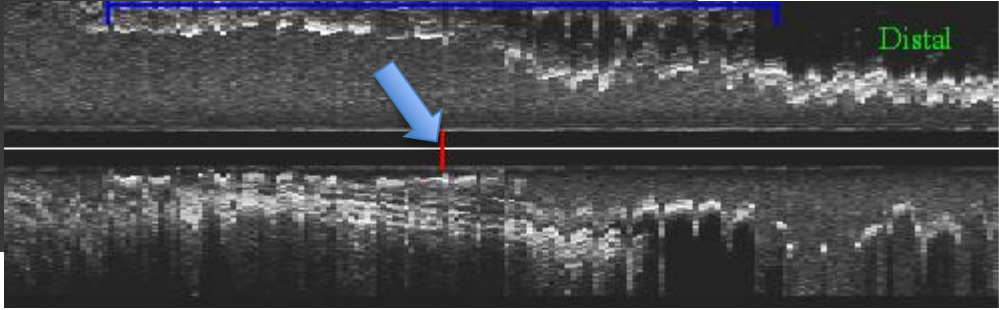
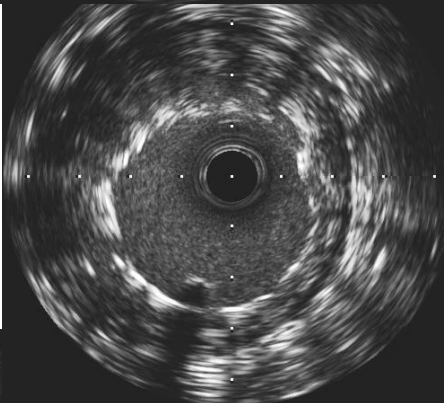
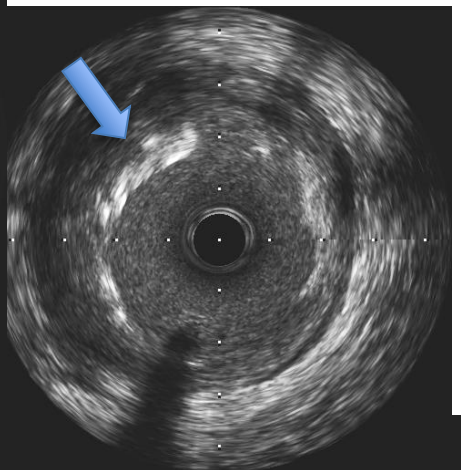
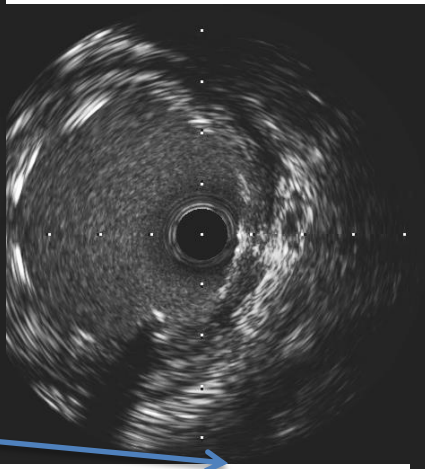
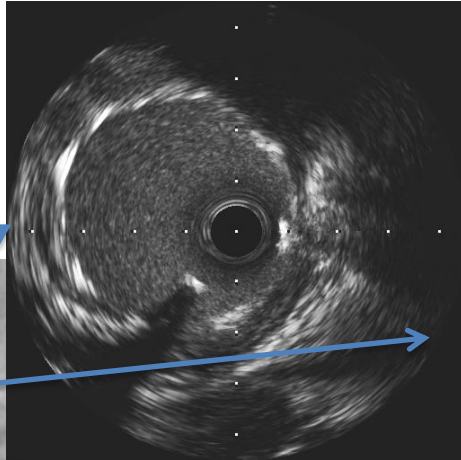
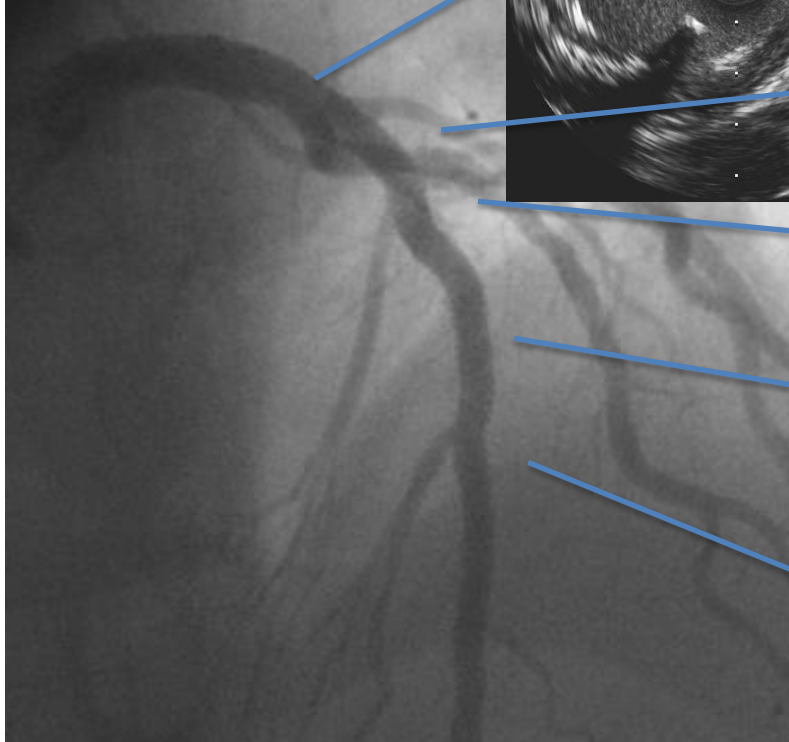
Left anterior descending IVUS



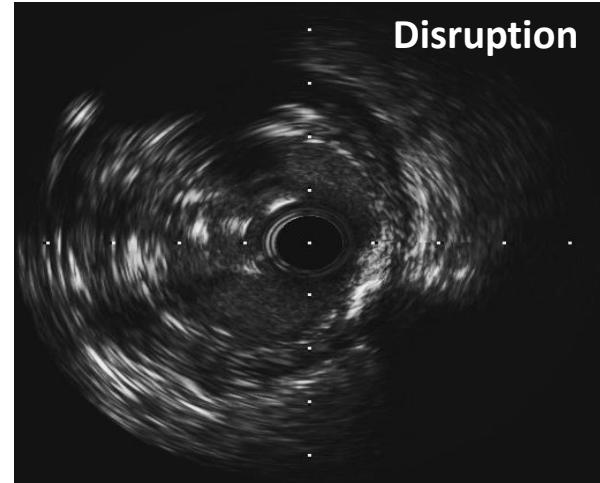
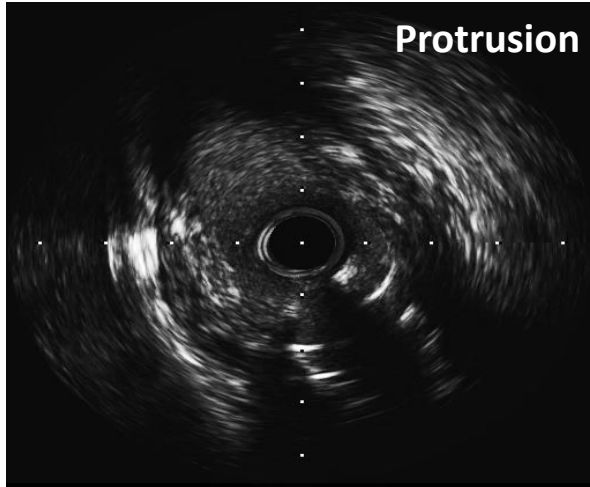




LAD and LM stenting to cover the disrupted stent



IVUS SUMMARY



The patient had no clinical consequences

